

ReeChen

GR1500L



Features

Safe and
Reliable

- Smart liquid cooling system for efficient heat dissipation
- IP54 and C3 anti-corrosion design
- Three levels fire suppression mechanism

Intelligent and
Easy to Use

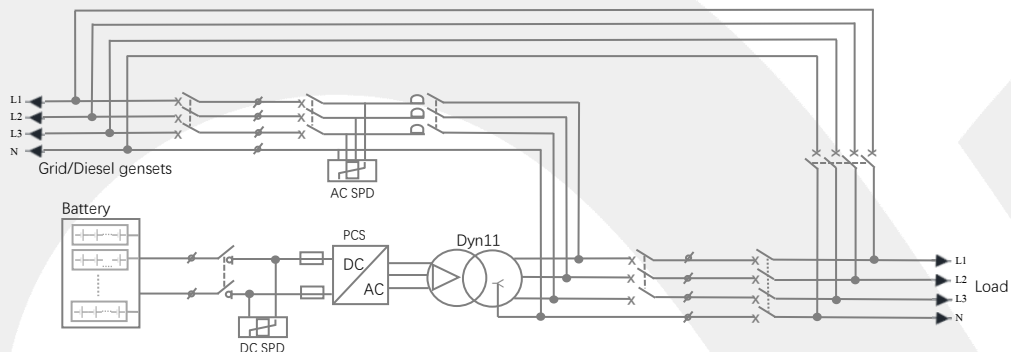
- Standard container integrated design, easy to install
- Battery capacity and discharge time prediction
- Cloud O&M, fast fault analysis and handling

Efficient and
FLexible

- Pre-commissioning, with excessive site work
- Support diesel generator access
- Millisecond dynamic response



Electrical Diagram



Specification Parameters

Model	ReeChen GR1500L
DC Side	
Cell type	LFP/280Ah
Battery capacity(BOL)	1505kWh
Rated voltage	768V
Battery Voltage range	648~864V
System configuration	240S1P×7
AC Side	
Rated power	500kW
Rated voltage	400V
Voltage range	320V~440V
Rated frequency	50Hz
AC connection	3L+N+PE
System parameter	
Isolation transformer	Transformer
Dimension (W*H*D)	6058×2591×2438mm
Weight	< 25T
Cycle performance	≥ 6000 cycles; @25±2°C,0.33P,SOH≥80%
Fire suppression	UL Listed 42 Bar FK 1230 FIRE SUPPRESSION SYSTEM (Support PACK level)+flammable gas detection + exhaust + Water Sprinkler System
Cooling concept	Liquid cooling
Operating ambient temperature range	-30~50°C
Operating altitude	2,000m (When the altitude is between 2000-4000m, the output of the system will be de-rated.)
IP rating	IP54
Communication protocols	Modbus、4G (MQTT)
Remote monitoring	Cloud EMS, mobile APP
Anti-corrosion Grade	C3
Compliance	UN3536, UN38.3, IEC62619, IEC62477, UL9540A, UL1973
Application scenarios	C&I energy storage, microgrid, emergency power backup